



# PASS

---

Partner Alliance  
for Safer Schools

---

Kevin Wren

---

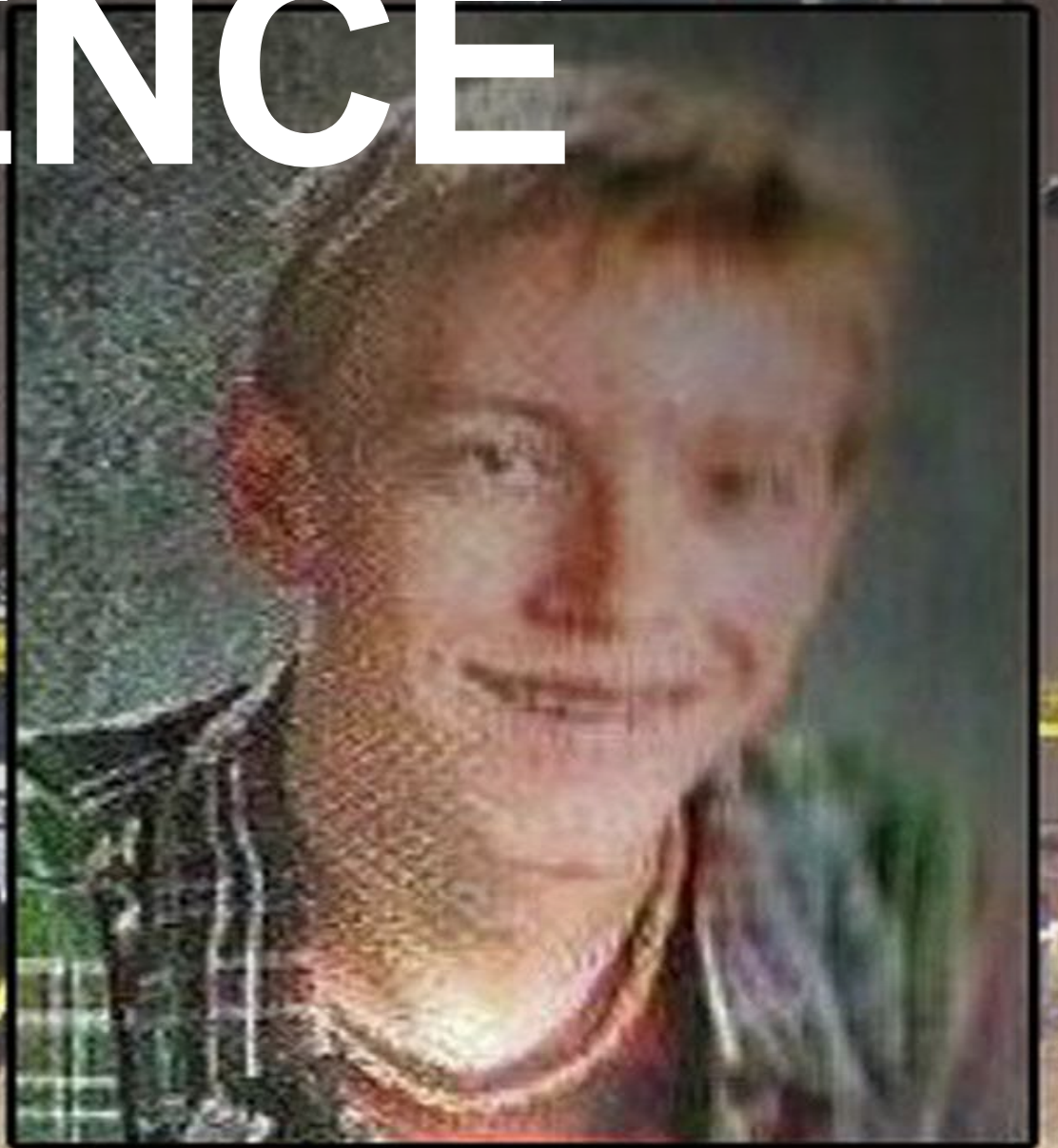


**NOT AN EXPERT  
BUT AN AVID  
STUDENT**



**PASSION**

# EXPERIENCE





**DRIVE**



What is PASS?

A coalition of organizations and individuals from the **education, public safety** and **industry** communities, brought together to develop and support best practice recommendations for school safety and security across multiple disciplines.



# PASS Leadership

- K-12 Safety and Security Directors
- Safe Schools Organizations
- Sandy Hook Parents
- Industry Associations
- School Architects
- Fire and Building Code Experts
- Security Consultants
- Systems Integrators and Manufacturers





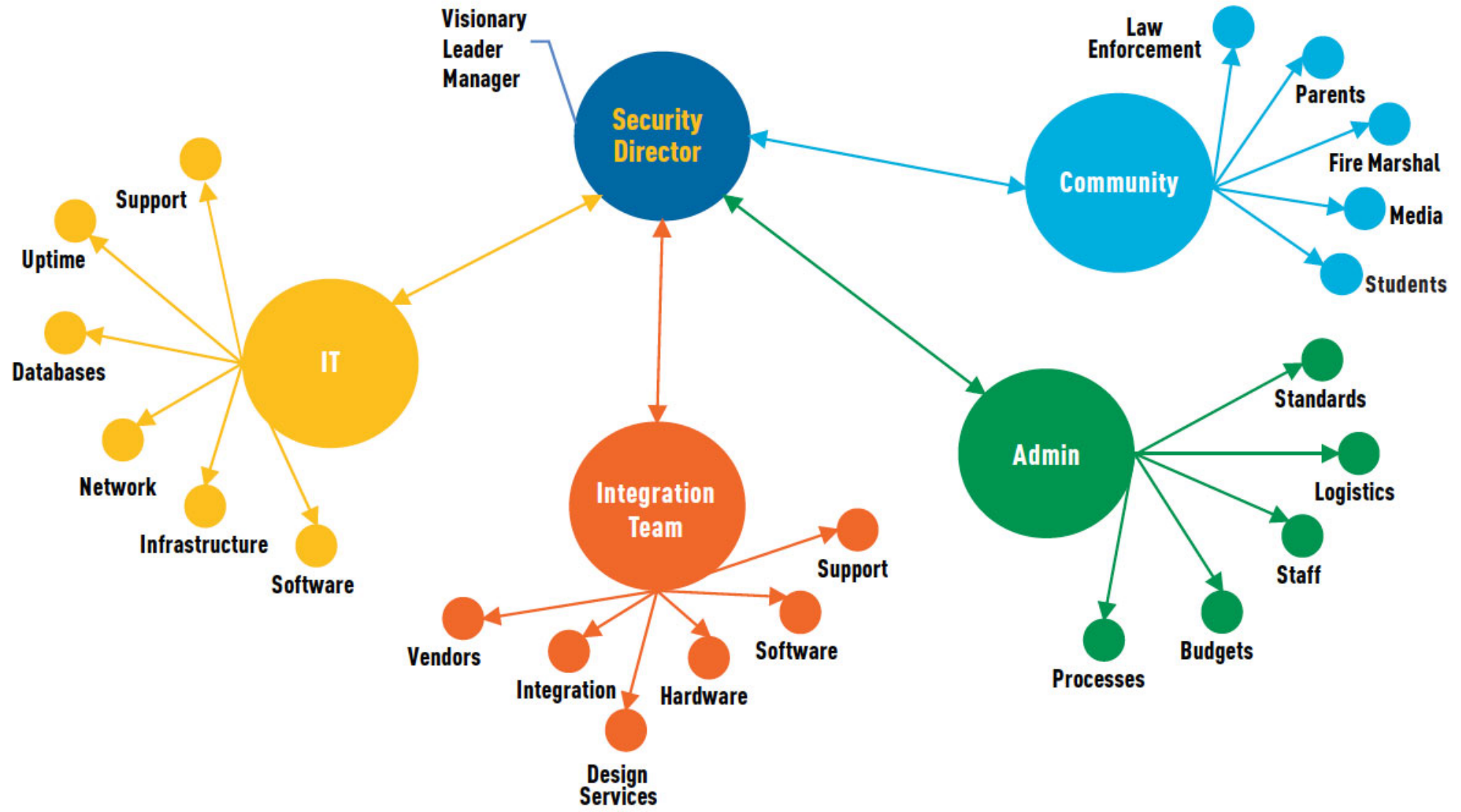


**PASS**  
Partner Alliance  
for Safer Schools

**Safety and Security  
GUIDELINES**  
for K-12 Schools

1. Failure to assemble a planning team that includes all appropriate and necessary stakeholders





2. Low priority for security based on an “it won’t happen here” mentality





# JIN KIM

FBI VETERAN/  
EXPERT ON ACTIVE SHOOTER & WORKPLACE  
VIOLENCE PREPAREDNESS

# IRATE PARENT



# DANGEROUS

## Animal on the playground



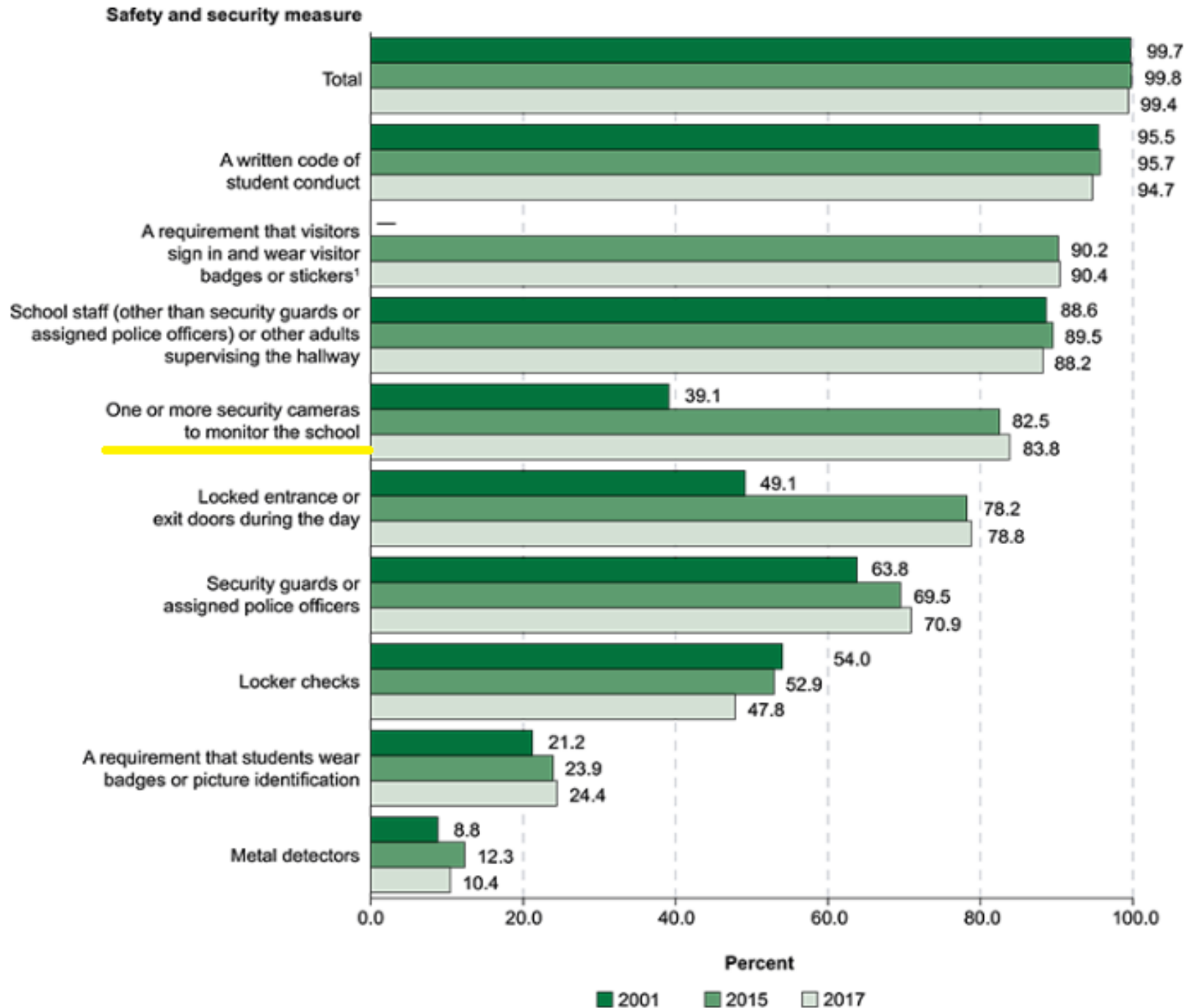
3. Investing in advanced/high-cost solutions before ensuring basic security measures and procedures first



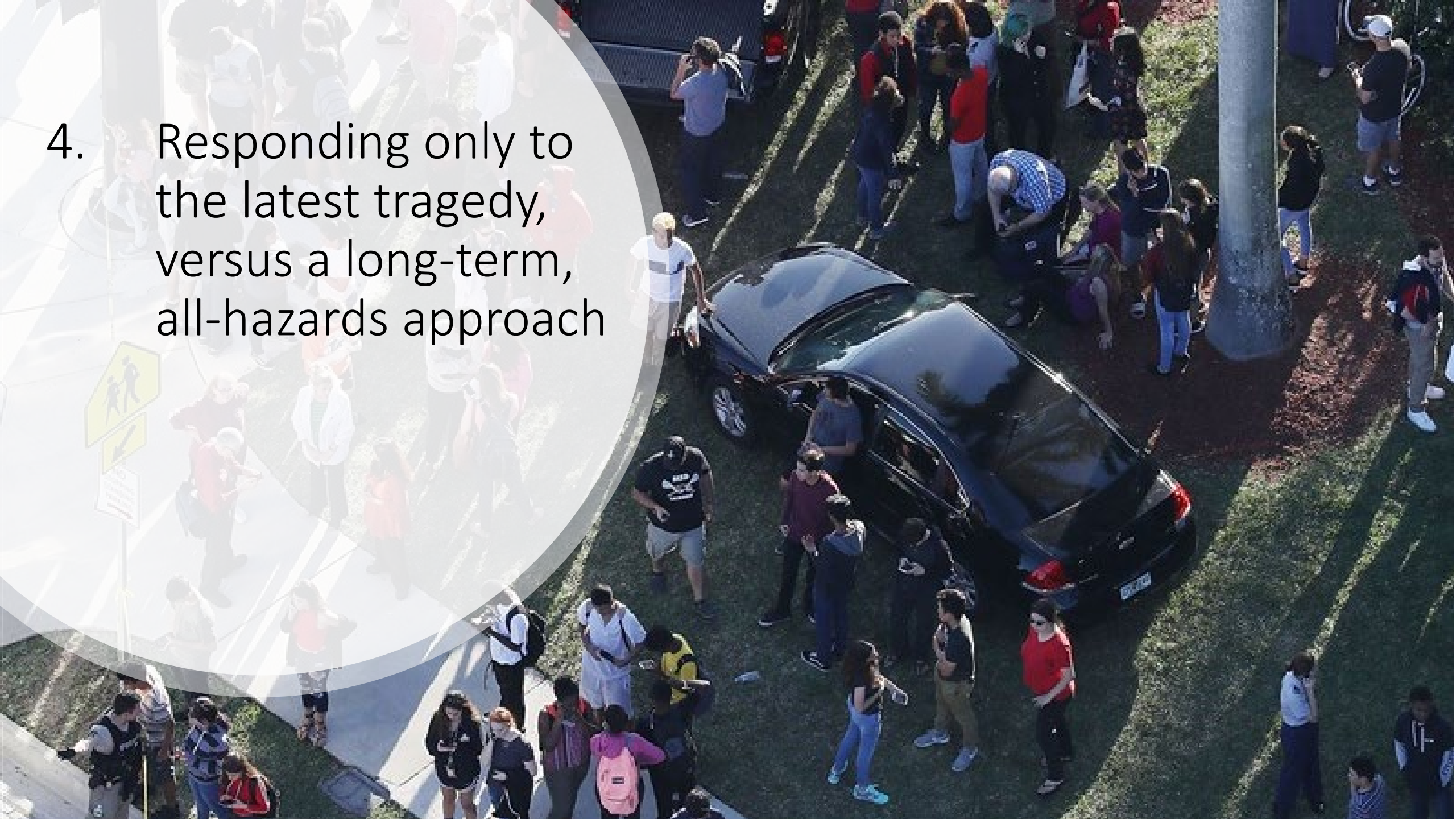


# National Center for Education Statistics

Percentage of public schools that used selected safety and security measures, by school level: School year 2015–16



4. Responding only to the latest tragedy, versus a long-term, all-hazards approach



# School shootings are extraordinarily rare. Why is fear of them driving policy?



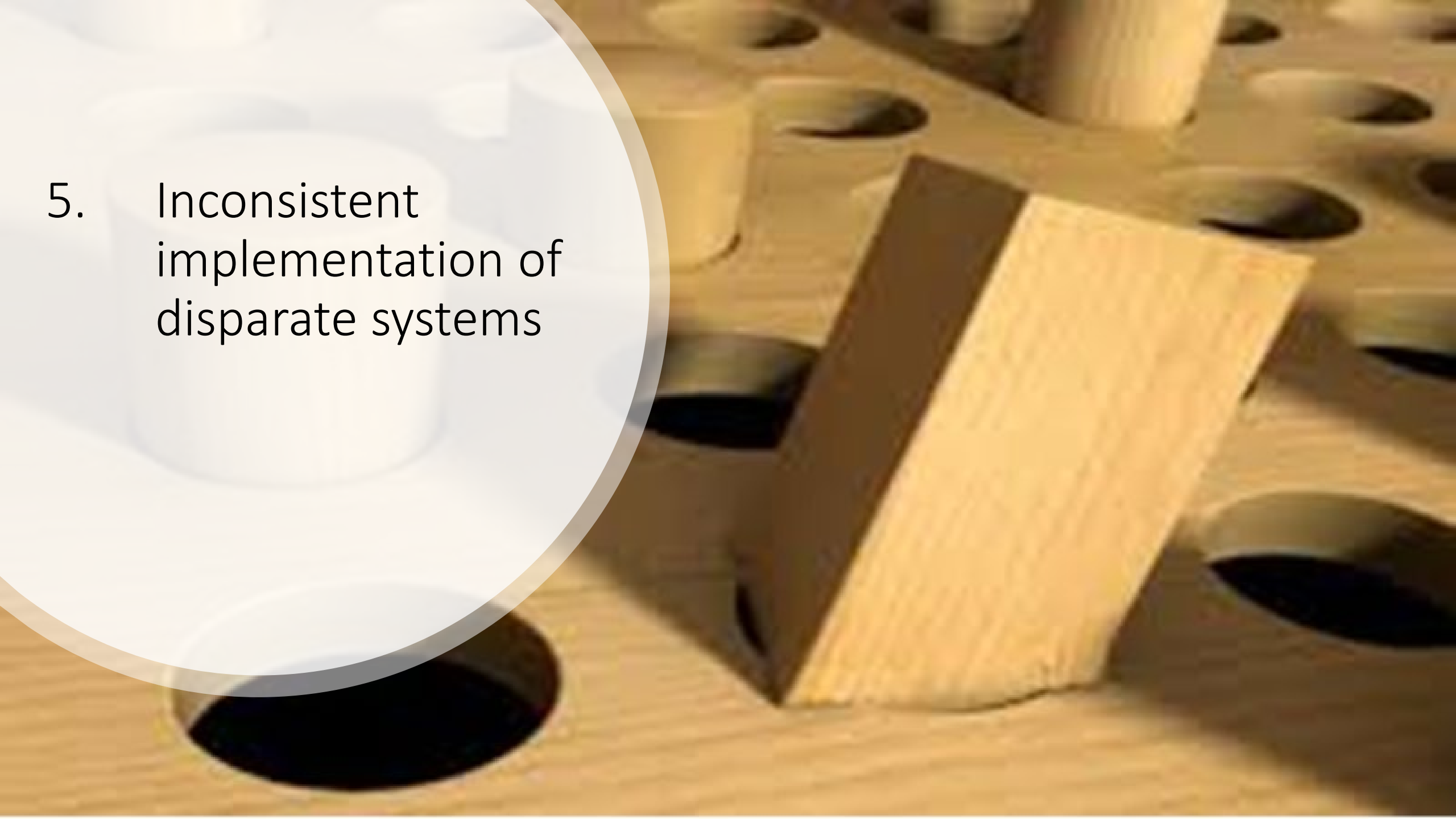
By **David Ropeik**  
March 8, 2018

**The  
Washington  
Post**



**MICHAEL**  
**DORN**  
Executive Director

5. Inconsistent  
implementation of  
disparate systems



School	Camera	Fencing	Intercom	Access Control	Vestibule	Weather Notification
Lakeside High	Green	Yellow	Pink	Light Green	Red	Red
Northwestern	Light Green	Green	Pink	Light Green	Red	Red
Saluda Trail	Light Green	Red	Yellow	Light Green	Green	Red
West Side	Light Green	Yellow	Yellow	Light Green	Yellow	Red
Sullivan	Light Green	Red	Yellow	Light Green	Yellow	Red
Banks Trail	Light Green	Red	Yellow	Light Green	Green	Red
Beechwood	Light Green	Red	Green	Green	Yellow	Red
Eastlake Middle	Light Green	Red	Yellow	Light Green	Green	Red
Richmond Drive	Yellow	Red	Pink	Light Green	Yellow	White
Northside	Yellow	Green	Pink	Green	Yellow	White
Blanchard Park	Yellow	Red	Yellow	Light Green	Yellow	White
Sunset Park	Yellow	Pink	Yellow	Light Green	Yellow	White
Mt. Holly	Yellow	Red	Yellow	Light Green	Yellow	White
Ebinport	Yellow	Yellow	Yellow	Green	Yellow	White
Augusta	Yellow	Pink	Pink	Light Green	Yellow	White
Evans	Yellow	Red	Yellow	Green	Yellow	White
India Hook	Light Green	Green	Yellow	Green	Yellow	White
Catawba	Yellow	Green	Yellow	Green	Yellow	White

6. Choosing lowest-cost solutions above all other considerations, such as total life cycle costs



# MAINTENANCE





7. Reliance on technology for emergency communications not designed for it



WALKIE TALKIE



8. Over-reliance on single type of solution or technology to address a broad range of safety and security challenges

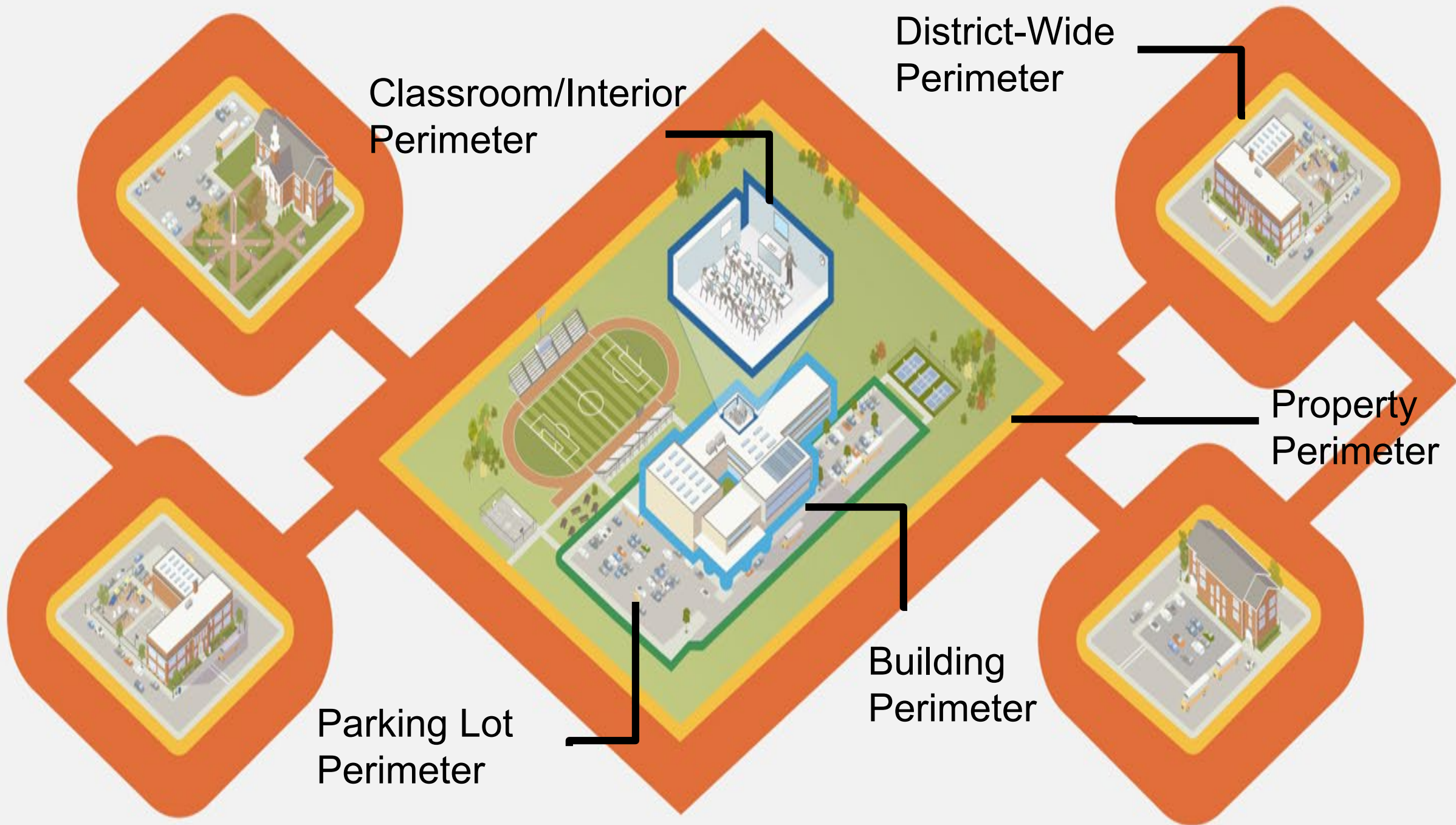


# **SAFETY AND SECURITY COMPONENTS**

- Policies and Procedures
- People (Roles and Training)
- Architectural
- Communication
- Access Control
- Video Surveillance
- Detection and Alarms

9. Failure to appropriately balance mitigation against internal and external threats





Classroom/Interior  
Perimeter

District-Wide  
Perimeter

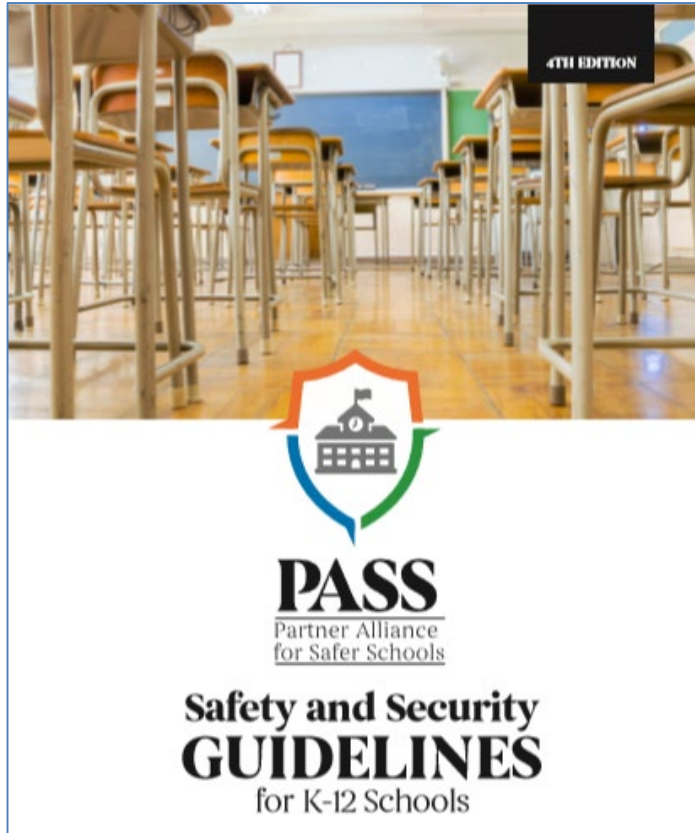
Property  
Perimeter

Building  
Perimeter

Parking Lot  
Perimeter

10. Unnecessary products that can be solutions in search of a problem





# More Information & to Download

[www.passk12.org](http://www.passk12.org)

Kevin Wren  
803-984-7007