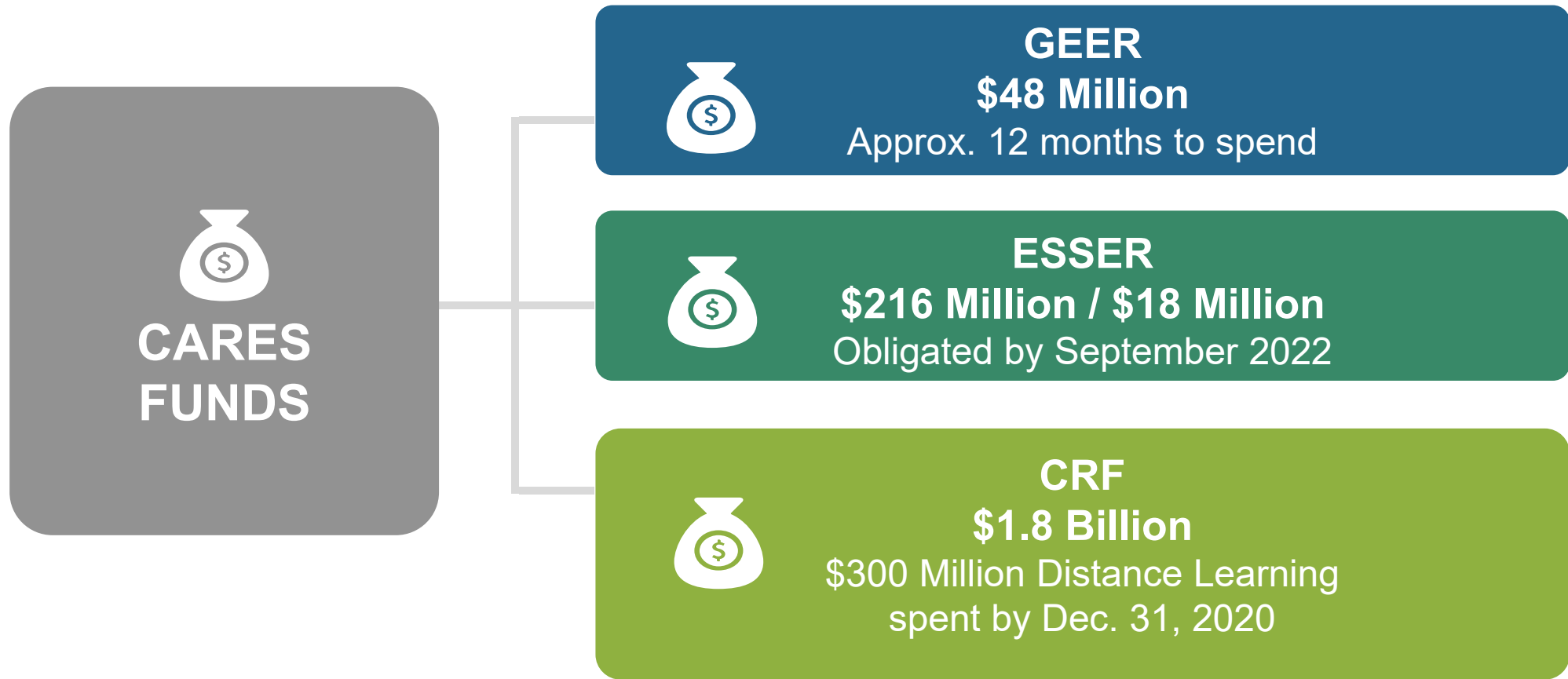




State Board of Education Work Session

July 14, 2020

**Every Child.
Every Chance.
Every Day.**



CARES TOP PRIORITIES

ESSER LEA

COVID-19 Related Expenses for LEA's

- ESSER funds are designed to improve coordination, responses to prevent, prepare for, and respond to long term closures to ensure equitable services.
- LEAs have the flexibility to determine best use of ESSER funds in their local school system. Expenses may include, but are not limited to, devices or hot spots to enhance remote learning, additional staffing like teachers or nurses, PPE such as masks or gloves, or additional cleaning or sanitization materials.
- LEAs complete application – once, application is approved, the LEAs can draw the money.

ESSER STATE

Digital Curriculum

- The statewide digital curriculum will be taught by Alabama teachers.
- The digital curriculum is available for school systems at no charge.
- Each local school system will have the flexibility to include the digital curriculum in their local remote learning plans.
- The remote learning plans may differ from district to district as school systems have the discretion to implement according to what fits the system's needs locally.

Digital Textbooks

- Improved access to digital textbooks and library
- Estimated cost for implementation would be \$3,928,830

GEER

WiFi on School Buses

- This would allow students to have Internet access while riding buses to and from school.
- It will also allow buses to be parked throughout the community as mobile hotspots, a practice that has been effectual in both rural and urban communities this spring.
- Currently 226 of our 6,418 buses are enabled (less than 1%).

Academic Support & Instructional Resources

- Instructional Resources to close achievement gaps, limit learning loss, and support parents who are assisting their children are very important.
- Enhance our afterschool tutoring, assessments, and other supports

CRF

Digital devices and Internet connection

- An exact price for this would be around \$288,000,000 if we provided \$400 for each student.
- \$100,000,000 for Internet-enabled devices.
- Distribute funds to LEAs on a grant basis.

CRF

Healthcare supports

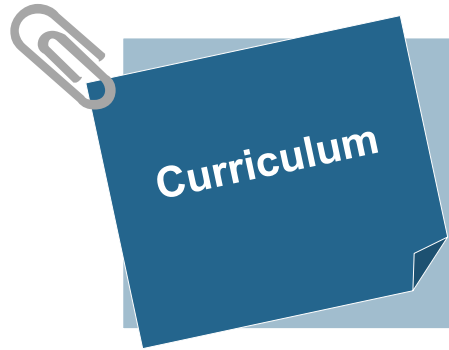
- This could include grants to upgrade nursing facilities, pay for extra weeks for nurses to work in the summer preparing, pay for sub nurses, and simply add more nurses.
- Distribute funds via grants to LEAs.
- Approximately \$72,000,000 to give each school \$50,000.

Improving Remote Learning



- **Statewide Digital Curriculum**
- **Devices for Students**
- **Professional Development for Teachers**
- **Statewide Learning Management System**
- **Connectivity in Rural Areas through
Broadband Expansion, WiFi Access Points,
and Hot Spots**

Remote Learning Access Tools



Digital Curriculum/ Learning Management System

Digital Content

- Schoology (Acquired)
- RFP in Process
- Statewide curriculum for local education agencies
- Approx. cost is \$18,000,000
- Funded with ESSER from USED

Digital Textbooks

- Approx. cost is \$4,000,000
- Additional funding request

**TOTAL = \$22,000,000 less \$18,000,000 from ESSER
FUNDING REQUEST = \$4,000,000**



Internet Connection

Broadband (Fiber Optic)

- Telephone companies
- Rural Electric Companies
- Cable Companies
- Satellites

Wireless

- Telephone companies
- Wireless carriers

Public libraries

WiFi enabled Buses

- Conducted survey – less than 1% of buses in the state are WiFi enabled (226 out of 6,418)
- Approx. equipment cost is \$7,000,000
- Annual service/ connection charge is approx. \$3,000,000
- Additional funding request

**TOTAL = \$10,000,000
FUNDING REQUEST = \$10,000,000**



Internet Enabled Devices

Apple

Microsoft

Google

Internet Enabled Devices

- Laptops, Tablets
- Approx. cost is \$100,000,000 = \$135 per student
- Additional funding request
- Funds for devices would be distributed to local education agencies in grants

Survey indicates school issued at-home devices:

- Chromebooks = 63%
- iPads = 1%
- Other Laptops = 36%

**TOTAL = \$100,000,000
FUNDING REQUEST = \$100,000,000**

Facial Coverings



**2.5 Million Masks have been
ordered for Alabama Schools**



**Approximately 3 washable, reusable masks
for each student and staff member.
Funding was provided by CRF.**

Hand Sanitizer



**600 gallons
of hand sanitizer**

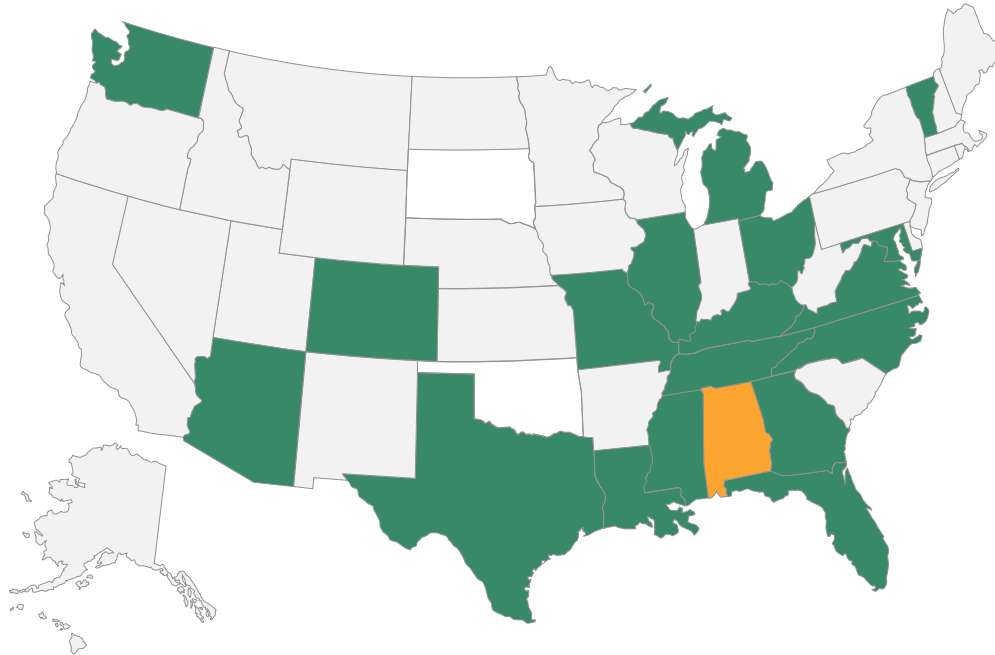
**Over 600 gallons of hand sanitizer
have been delivered to Alabama Schools.
Funding was provided by CRF.**



ROADMAP TO REOPENING SCHOOLS

**Every Child.
Every Chance.
Every Day.**

SEAL Task Force



“Local school districts shall make staffing decisions and determinations related to access to school buildings in accordance with all applicable public health orders ...”

Alabama Governor’s 4th Supplemental State of Emergency

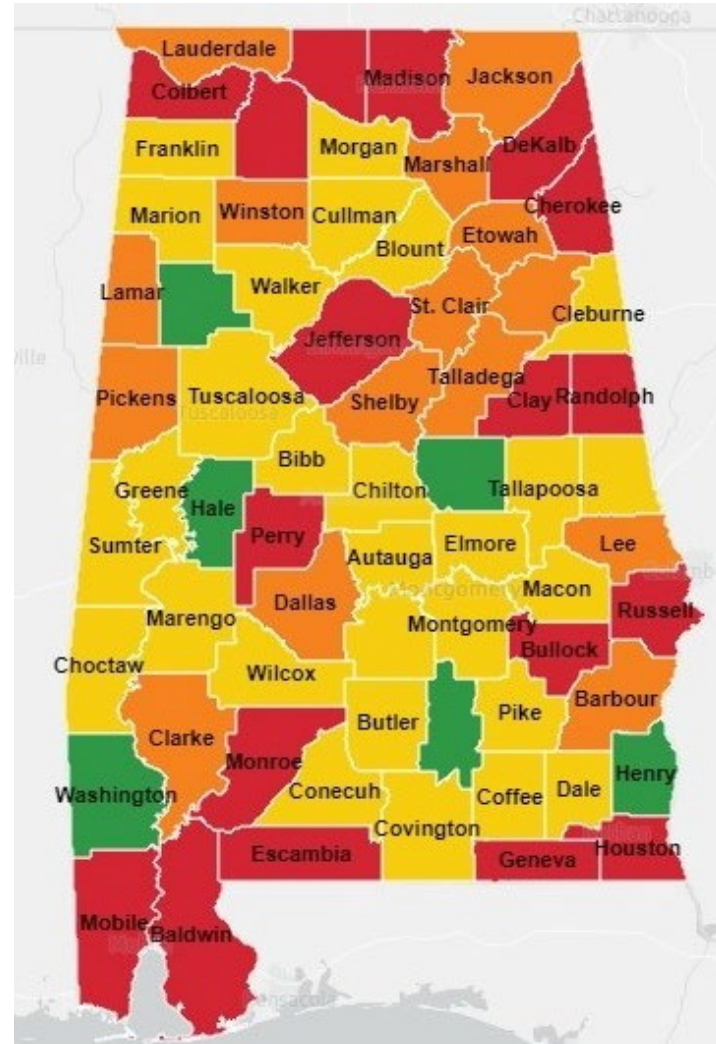
- Arizona
- Colorado
- Florida
- Georgia
- Illinois
- Kentucky
- Louisiana
- Maryland
- Miami-Dade
- Michigan
- Mississippi
- Missouri
- North Carolina
- Ohio
- Tennessee
- Texas
- Vermont
- Virginia
- Washington

ADPH Color-Coded Guides by County



Released June 30, 2020

“...a new tool that allows policy makers and others viewing to recognize the COVID-19 risk status in *each* county and to guide health behavior.”



Governance

What the Roadmap IS



A guidance document

Based on evidence and expertise

Comprised of the essential actions designed to spur thinking, planning, and prioritization

Part of a continuum of school decision making

What the Roadmap is NOT



Not legal advice or an ALSDE mandate

Not based on opinion or ideology

Not an exhaustive list of every action that a school system or school leader will need to return to school

Not a remote-learning playbook or school-closure guidance

Educational Responsibilities



Alabama Department of Public Health

- Contact tracing
- Public Health guidance and orders
- Establish recommendations for personal hygiene and social expectations



Alabama State Department of Education

- Research and share best practices for learning during pandemic
- Remote Learning Framework
 - Professional Development
 - Learning Management System
 - Digital Curriculum Content
- Expectations for statewide standards and expectations for
 - Spending federal and state funds
 - Attendance
 - Assessment and accountability
 - Transportation
 - Vulnerable populations
 - Child nutrition



Local School Systems

- Establish school calendar
- Clean and sanitize buildings
- Teach students and respond to learning needs
- Utilize funds on priorities based on individual community needs
- Manage day-to-day operations



Issues Public Health Orders

Contact Tracing

Determines County Risk Alert Level

**Recommendations for personal
hygiene and social expectations**

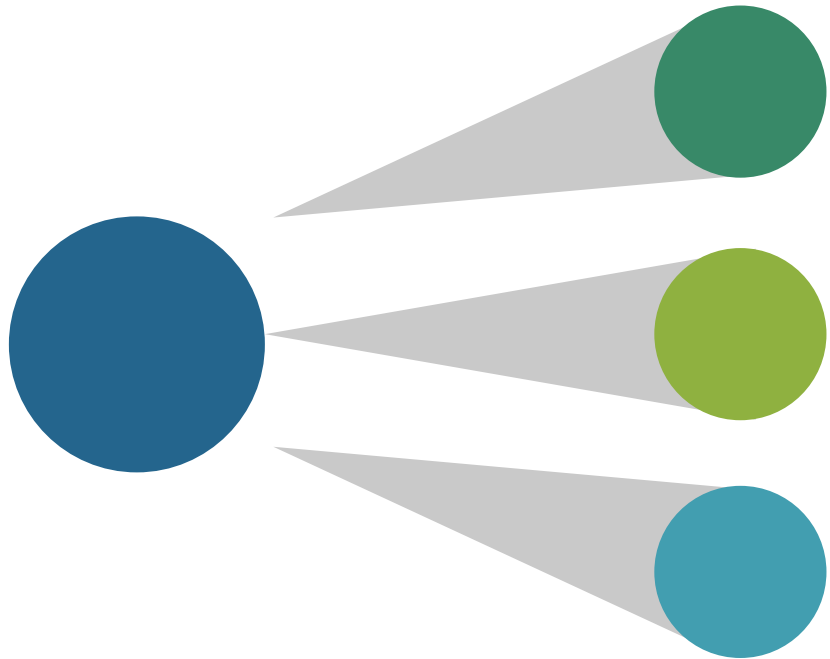
Roadmap Focus Areas

**Instruction &
Technology**

Wellness

**Operations &
Facilities**

Roadmap Recommendations



Essential

Required by law, policy, or governmental order, or a critical practice.

Guidance

Best practices gleaned from research and long-term experience and highly recommended for implementation where feasible.

Consideration

Additional best practices informed by emerging research, recent studies, and practical experience

Navigating the Status of Campus Availability



Instructional Scenarios

Traditional

Students attend classes in a traditional, on-campus setting.

Remote

Students attend classes “remotely” using a variety of virtual and paper resources. Teachers have regular check-in times and can provide virtual instruction.



Blended

Students transition between traditional and remote and back again as needed or by preference.



American Academy of Pediatrics Guidance

The American Academy of Pediatrics (AAP) released guidance for school re-entry. In this guidance, AAP firmly states, “the AAP strongly advocates that all policy considerations for the coming school year should start with a goal of having students physically present in school. Schools are fundamental to child and adolescent development and well-being and provide our children and adolescents with academic instruction, social and emotional skills, safety, reliable nutrition, physical/speech and mental health therapy, and opportunities for physical activity, among other benefits.”



Will campuses reopen for in-person instruction?



YES

The expectation is for Alabama campuses to reopen this fall

BUT

There will be a remote learning option

AND

Local Boards of Education upon the recommendation of their **Superintendent** and in consultation with the **Alabama Department of Public Health** and/or local public health officials will make determinations about specific changes in campus status throughout the year





Timeline

Dr. Daniel Boyd



Wellness

Jennifer Ventress



**Vendors and
Customer
Service**

Terry Roller



Transportation

Chad Carpenter



Child Nutrition

June Barrett Owen



**Learning &
Assessment**

**Dr. Elisabeth Davis
and
Angela Martin**



Career Tech

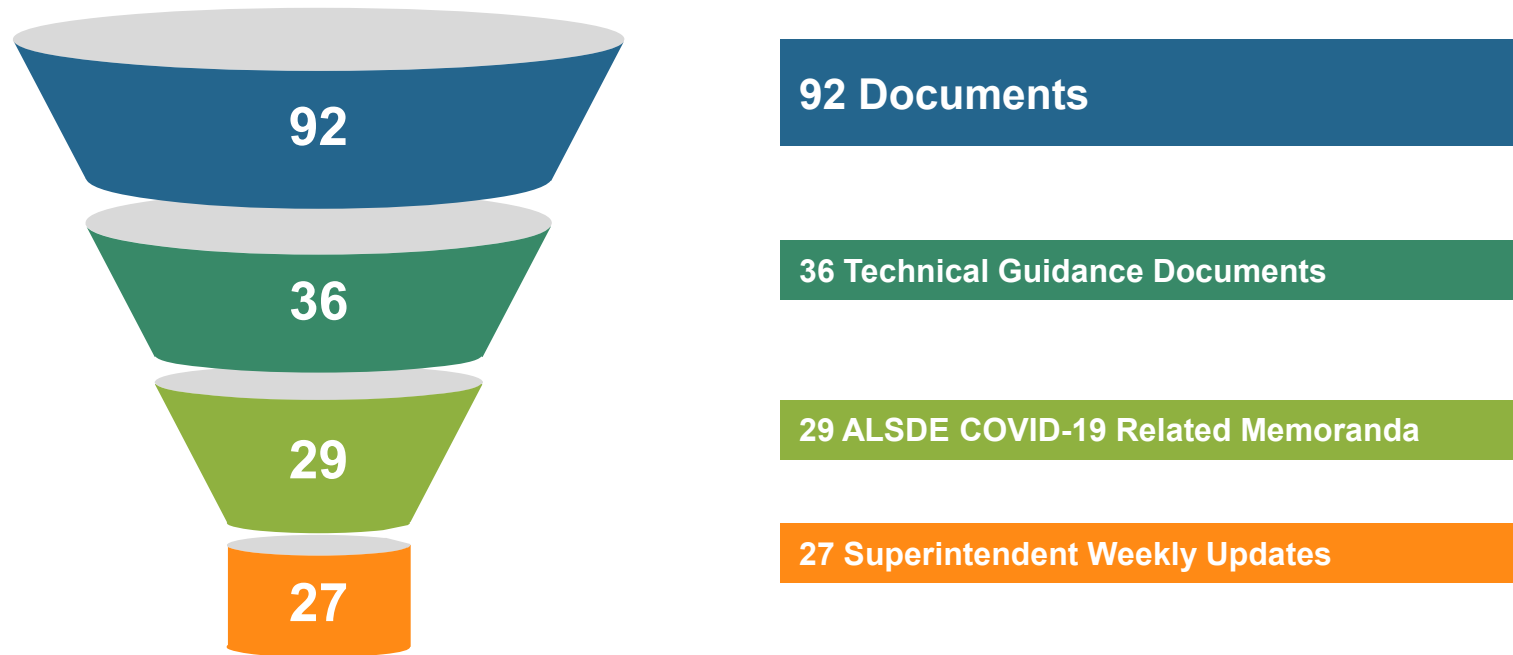
Dr. Jimmy Hull

LEA Communication Timeline



Dr. Daniel Boyd

LEA Communication



MARCH 2020



- March 6 through Current – LEA Superintendent Weekly Updates
- March 13 – Guidance for School Closure (March 18 – April 6); Coronavirus Parent and LEA Guide (English & Spanish)
- March 15 – Released COVID-19 FAQs
- March 17 – Announcement for Superintendent’s Extending Access to Learning (SEAL Task Force)
- March 18 – Short-term Closure CNP Guidance
- March 18 through 24 – LEA Superintendents’ survey administration & data analysis regarding completing 19-20 school year, challenges, current inventory, etc.
- March 19 – SEAL Task Force Inaugural Meeting
- March 20 – School Closure Updates and Technical Guidance Issued
- March 20 – Submission of Assessment & Accountability Waiver to USDOE
- March 26 – Submission of USDA Meal Pattern Flexibility Request (CNP)
- March 24 – DRAFT LEA Academic Continuity Plan reviewed with SEAL Task Force
- March 26 – LEA Academic Continuity Plan Template & Guidance Released
- March 26 – Temporary Flexibility for Educator Preparation/Certification Requirements
- March 27 – USDOE Approval of Assessment & Accountability Waiver
- March 30 – Webinars (2) hosted by ALSDE for LEA curriculum leaders on completing and implementing LEA Academic Continuity Plan
- March 31 – Webinars (2) hosted by ALSDE for LEA curriculum leaders on completing and implementing LEA Academic Continuity Plan
- March 30 through May 7 – Updated Academic & Technical Guidance for Emergency End-of-Year Closures (Appendices A, B, C, & D)
- March 31 – CNP Non-Area Eligible Meal Sites

APRIL 2020



- April 1 – Special Education Services Q & As Released
- April 2 & April 3 – LEA school staffing (skeleton crew example) and completing 19-20 school year updates
- April 6 – Federal Funding waiver submitted to USDOE
- April 8 – Webinar hosted by CLAS – COVID-19 Considerations for Special Educators (Crystal Richardson and Julie Weatherly)
- April 9 – Announcement of Educator Certification Flexibilities
- April 20 – Webinar hosted by CLAS – COVID 19 Special Education, 504, and More, Oh My! (Crystal Richardson and Julie Weatherly)
- April 21 – USDOE Approval of Funding Flexibility Waiver
- April 29 – Release LEA Application for CARES Act ESSER funds



MAY 2020

- May 5 – CARES Act FAQs and other resources
- May 5 – Webinar hosted by CLAS – Supporting English Learners (ELs) Through COVID-19 (Susan Beard and Heidi Goertzen)



JUNE 2020

- June 22 – USDOE IDEA Dispute Resolution FAQs
- June 19 – 21 – Review DRAFT Alabama Roadmap for Reopening Schools with LEA superintendents for feedback
- June 26 – Release of Roadmap for Reopening Alabama's Schools & Parent Guide
- June 26 – Webinar hosted by ALSDE with LEA curriculum leaders on the reopening roadmap



JULY 2020

- July 6, 7, & 9 – Webinar series hosted by CLAS for training on roadmap (ALSDE Office of Student Learning, Jeff Langham, Chad Carpenter, June Barrett, Terry Roller, and Anna Morris: LEAs – Boaz City, Huntsville City, and Opelika City)

Wellness



Jennifer Ventress

Customer Service & Vendors



Terry Roller

Customer Service



-
- Beginning March 16, 2020
 - 1500 communications logged
 - 311 Parents
 - 249 Superintendent and/or designees
 - Stakeholders, doctors, elected officials, vendors (PPE)
 - Governmental interagency collaboration
 - Forms of communication
 - Phone calls
 - Emails
 - 24-hour turn around
 - Time in/out, name, location, nature of the call, action taken, follow-up activities
-

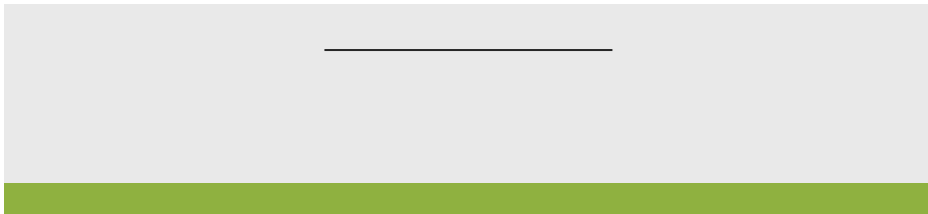
Vendors



- Over 45 vendors
- Updated weekly
- Shared with local education agencies
- Various products including:
 - Masks
 - Disposable
 - Washable
 - Customizable
 - Hand sanitizer
 - Face shields
 - Gloves
 - Thermometers

Antimicrobial Therapy, Masks, KN-95, sanitizing wipes
Disposable masks, reuseable and customizable face masks & gowns, thermometers
Air purification UV Light
Partitions and shields
Sanitizers, cleaning supplies, washable face masks
Hand Sanitizer
Masks 3M N95, KN95, Gloves, Mint sented Hand sanitizer, Class A Gowns
Masks for children, Electronic hand sanitizer dispensers, fog machines,
Generator and disinfectant organic & green non toxic.
Fogging machine
Temperture check machines
Disinfectant spray, 8 hour hand sanitizer, Laundry solution
Face Shields
HVAC SOLUTION
Disinfection, fogging, misting, PPE approved disinfection, Clorox 360 machine, electrostatic & hand sanitizer
Nightly disinfection programs & consulting available
HVAC Filtration
Face Shields, acrylic barriers, mobile sanitation station
MASK, Mask cleaning service, temperature scanner
UV Lighting solution to kill airborne COVID
Temperture scanning kiosk
Repirators, N95, KN95, non-medical masks, (90-95% efficacy) Hand sanitizer, gowns, face shields, head covers, gloves, shoe covers
E-Mist backpack sprayer, sanitizers, masks KN-95's

Transportation



Chad Carpenter



Transportation

- Survey parents (virtual & self transport)
- Parents/guardians sign notice
- Develop specific bus driver protocol for symptomatic child
- Disinfect buses between routes
- Bus driver responsibilities during loading process (No temp check)
- Hand sanitizer
- Plexiglass barriers
 - FMVSS standards
 - Provide driver PPE
- Social distancing ideas
 - Skip seats (if possible)
 - Leave first two seats open
 - Sit household families together
 - Assign seats (contact tracing)
 - Load back to front & invert unloading

Child Nutrition



June Barrett Owen,
Med, RD, LD, SNS



Child Nutrition

- Communication
- Planning for meal service locations
 - Cafeteria
 - Classroom
 - Other areas of the school
- Menu Planning, Service and Production
 - Dining location
 - Product Availability
 - Student ages
 - Special Needs
- Meal Counting and Claiming
 - Reimbursable meals counted by computer
 - Or roster
 - Prepayments
- Training- Staff
- Food Safety
- Waivers

Learning & Assessments



**Angela Martin
& Dr. Elisabeth Davis**

Assessment and Accountability



- Held conference calls with Evan Skloot, Don Peasley and Debra Sphitz with the USDOE on Friday, July 10, 2020 concerning assessment and accountability flexibility opportunities
- The USDOE is currently working on a document for implications of accountability system and assessment reporting for states based on waivers granted for the 2019-2020 school year.
- The USDOE has encouraged states to stay in communication with their program directors relative to changes move through your state
- So far, the USDOE is not looking to consider blanket waivers as they did this spring
- The expectation from the USDOE is that students test this spring, but realizes things can change as they did this spring 2020
- Working with vendors to for secure opportunities for all students
 - Validity Study Conversations Occurring
 - WorkKeys Confirmed
 - ACT and DRC Planning Conversations Occurring
- NAEP Updates
 - August 28, 2020 states will be informed of assessment status
- Current 2019-2021 Assessment and Accountability Waivers
- Chronic Absenteeism
 - Coding

Learning & Assessments



- Alabama’s Reopening Roadmap Assessment System Framework
 - Provides comprehensive review of assessments
 - Aligns assessments to roadmap recommendations – essential, guidance, or consideration
 - Provides brief overview of each assessment and direct links to access related information

- Early Childhood Years Assessment System
 - AlaKiDS Overview <https://www.alsde.edu/sites/memos/Memoranda/FY20-2100.pdf>
 - Components & Suggested Testing Window <https://www.alsde.edu/sites/memos/Memoranda/FY20-2100.pdf>
 - Implementation Flexibility
 - The assessments are available in multiple languages.
 - All vendors are currently working on the process for implementing the assessments remotely.
 - The AlaKiDS virtual training dates previously shared in a memorandum dated July 1, 2020, provided multiple opportunities for teachers and other leaders to attend a session that best meets their needs.
 - Other AlaKiDS training options include assigning a limited number of teachers or other district personnel to attend with the plan to turn it around to the LEA.
 - Schedule an LEA training facilitated by your ARI Regional Literacy Specialist to help with LEA-specific calendars. ARI Regional Literacy Specialists are receiving specifically designed training that equips them to facilitate AlaKiDS training (either virtually or in person).
 - For the early math and reading assessments, LEAs have additional flexibility with the vendor(s) to organize individualized training based on specific timelines and needs.
 - Testing windows are provided in the attached chart and include very broad, suggested administration windows spanning several months that allows for additional flexibility.

Learning & Assessments

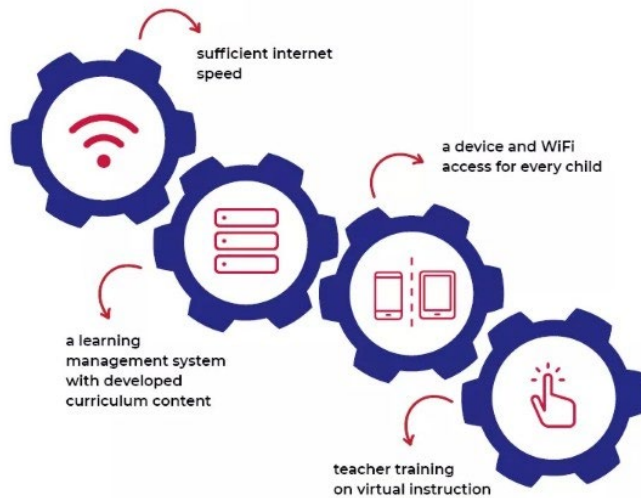
LEA Supports for Implementation of Reopening Roadmap



- **ALSDE Webinar Series Hosted by CLAS**
 - **Webinar Series:** Planning for Teaching, Learning, Assessments, & Supporting Vulnerable Populations (July 6, 2020); Using the Roadmap to Design Remote Learning Environments for Student Success (July 7, 2020); & Facilities, Operation, Transportation, Wellness, & Communication (July 9, 2020)
 - **Webinar Goals & Outcomes:**
 - Provide ALSDE in-depth information & LEA “boots on the ground” implementation
 - Fielded questions and answers from LEAs
 - Shared insights and resources directly aligned to specified component of roadmap
 - **Frequently Asked Questions:** Compiled and will be posted on ALSDE COVID-19 site by July 17, 2020

Learning & Assessments

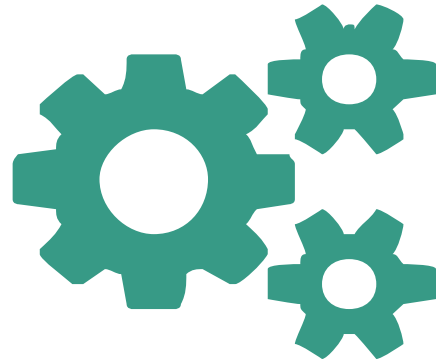
Making All-Remote Work



SOURCE: Mississippi Department of Education

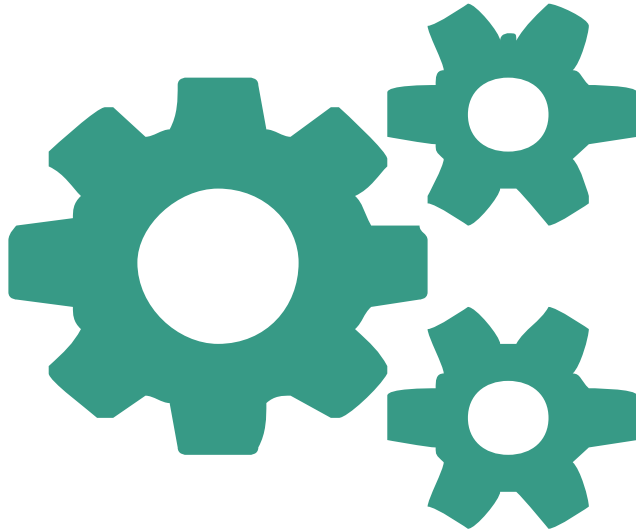
- Making All-Remote Work
 - Sufficient internet speed
 - A learning management system (LMS) with developed curriculum content /LMS – Schoology & Curriculum Content – SchoolsPLP and ACCESS
 - A device and Wifi access for every child /Supplemental Appropriations Funds, CARES Act Funds, & Device Specs
 - Teacher training on virtual instruction
 - Designing Remote Learning Framework
 - Hunstville City Schools DRAFT Remote Learning Reset Plan -
 - Opelika City Schools - [Parent Academy for Technology](#)
 - Opelika City Schools – Teacher Professional Development Depository [here](#) (Click the + and choose to join a class. The code is nk7732b)

Career Tech



Dr. Jimmy Hull

Career Tech



-
1. Career Tech Centers
 - a. Mixing Schools
 - b. Shared tools and equipment
 - c. Class sizes
 2. Lab/Shop/Hands on Work
 - a. Proper cleaning
 - b. Distancing
 3. Virtual options
-

